



# HBC 35A-800A

## Semiconductor Fuses

### 半导体保护熔断器



Standard/ 标准: IEC 60269-4, GB/T 13539.4, UL 248-13

#### INTERRUPTING CAPACITY / 分断能力:

200,000 amperes at 500V AC

50,000 amperes at 500V DC

#### TECHNICAL PARAMETERS/ 技术参数:

PART NO. 目录编号	CURRENT RATING 额定电流	SAFETY APPROVALS 安全认证	
		cURus	
HBC35	35A	○	
HBC40	40A	○	
HBC45	45A	○	
HBC50	50A	○	
HBC60	60A	○	
HBC70	70A	○	
HBC80	80A	○	
HBC90	90A	○	
HBC100	100A	○	
HBC125	125A	○	
HBC150	150A	○	
HBC175	175A	○	
HBC200	200A	○	
HBC225	225A	●	
HBC250	250A	●	
HBC275	275A	●	
HBC300	300A	●	
HBC325	325A	●	
HBC350	350A	●	
HBC400	400A	●	
HBC450	450A	●	
HBC500	500A	●	
HBC600	600A	●	
HBC700	700A	○	
HBC800	800A	○	

● DENOTES FOR APPROVAL

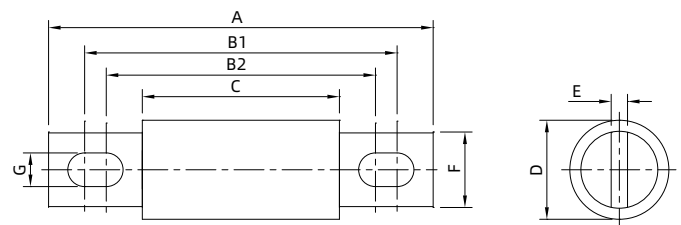
○ DENOTES FOR PENDING

● 表示已取得安全认证

○ 表示正在申请安全认证

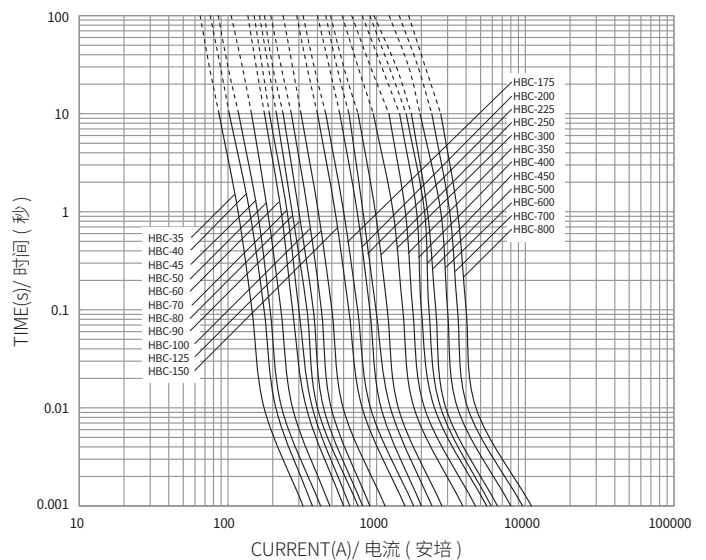
#### Dimensions/ 尺寸:

Unit 单位: mm



#### HBC 平均 I-T 曲线图 (仅供参考)

AVERAGE I-T CHARACTERISTICS CURVE  
(FOR REFERENCE ONLY)



CATALOG NUMBER	尺寸 Dimensions(mm)							
	A±2	B1±2	B2±2	C±1.5	D±1	E±0.5	F±1	G±1
HBC35 to 100	92	77	71.6	54	25	3.2	18	8.2
HBC125 to 200	92	75.6	72	54	31	4.8	24	8.6
HBC225 to 400	110	88	74.4	54	38	6.4	25.4	10.4
HBC450 to 600	110	90	74.4	54	50.8	6.4	38	10.4
HBC700 to 800	161	126.2	87.8	54	63.5	9.6	50	13.5